

PRODUCT OVERVIEW

METRON TRAFFIC FLOW AIR TRAFFIC FLOW MANAGEMENT

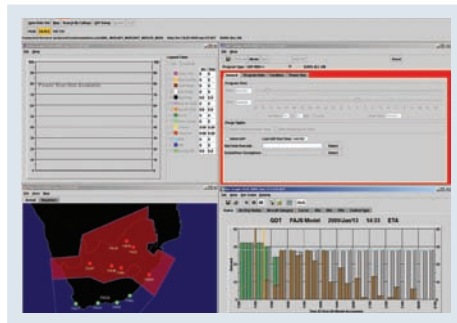
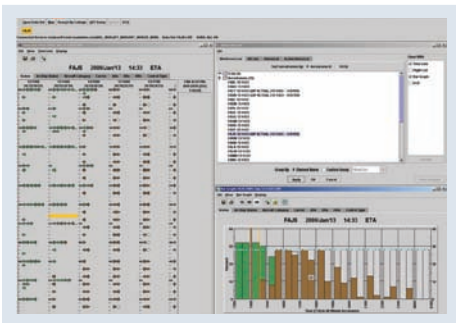
IMPROVING SYSTEM-WIDE EFFICIENCY, WHILE ENHANCING SAFETY

Metron Traffic Flow, deployable as a stand-alone solution or as part of the Metron Harmony integrated Air Traffic Flow Management (ATFM) solution, provides a framework for exchanging data among users who share the need for a common view of air traffic flow operations. Metron Traffic Flow serves as the foundation for ATFM and regional coordination, working within and across multiple airports, Flight Information Regions (FIR) and Air Navigation Service Providers (ANSP).

Using proven ATFM techniques, Metron Traffic Flow improves efficiency and predictability, while enhancing safety. Using data from multiple sources, air traffic is monitored in real-time to ensure users have the most up-to-date demand and capacity information from selected airports and airspaces. Users are able to model and implement traffic management initiatives to align air traffic demand with available capacity through specific airport-based and airspace-based flow programs. The aggregated available data provides ANSPs, aircraft operators and airport operators the capability to examine flight detail. In-depth analysis and reporting features allow users to continually improve operational performance.

FLEXIBLE DATA INTEGRATION ENGINE

An advanced, data integration and processing engine is at the core of Metron Traffic Flow, serving as the merging point for existing Air Traffic Control (ATC) systems, airline data sources and weather information. Metron Traffic Flow collects data from various sources in order to provide the best available predictions of



Metron Traffic Flow provides advanced situational and modeling displays for proactive solutions.



FEATURES

AGGREGATED DATA PROVIDES A COMPLETE PICTURE OF AIR TRAFFIC CAPACITY AND DEMAND

MODEL ALTERNATIVES PRIOR TO IMPLEMENTING AN INITIATIVE

FLIGHT SUBSTITUTION ENABLES AIRLINES TO OPTIMIZE USE OF CAPACITY

ANALYSIS AND REPORTING CAPABILITIES SUPPORT EVALUATION OF CURRENT AND PAST PERFORMANCE



air traffic demand. This data includes Official Airline Guide (OAG) schedule data, Collaborative Decision Making (CDM) functionalities, International Civil Aviation Organization (ICAO) standard messaging (FPL, CNL, CHG, etc.), ATC automation data and surveillance data. Metron Traffic Flow allows external data sharing with other aviation system users, ANSPs, airport operators and CDM participants.

ADVANCED DECISION SUPPORT

Metron Traffic Flow users can view current images of air traffic demand at selected airports and airspaces. When conditions such as weather, controller staffing, equipment outage or spikes in air traffic demand affect a resource's capacity, easy-to-understand visuals enable users to monitor the impact of those conditions. Using Metron Traffic Flow, ANSP users can identify a capacity/demand imbalance, model the impact of alternative Traffic Management Initiatives (TMI), coordinate TMIs with CDM participants and determine which alternatives yield optimal solutions to address the capacity/demand imbalance. Metron Harmony continually updates the predicted demand so that ANSP users can monitor the operational conditions and modify the TMI to adapt to the changing environment.

Metron Traffic Flow fully embraces and supports the goals and processes of CDM. Metron Traffic Flow enables an aircraft operator to exchange slots between their flights in real-time, thus optimizing their use of the overall capacity created by the ANSP to achieve business goals. The slot substitution capability is also available through a more advanced component called the Enhanced Substitution Module (ESM) which allows aircraft operators more complete and automated flight schedule management. Aircraft operators, Air Traffic Control Tower (ATCT) users and airport operators may view Calculated Takeoff Times (CTOT) for all flights using a web-based user interface. Aircraft operators may also modify their flight data, including Target Off-Block Time (TOBT), Earliest Airline Takeoff Time (ELTOT), Earliest Airline Landing Time (ELLDT) and registration numbers.

ABOUT METRON HARMONY

Metron Harmony is an advanced, integrated Air Traffic Flow Management (ATFM) solution with capabilities that provide strategic, pre-tactical and tactical efficiency, post operations metrics and performance analysis of air traffic operations for Air Navigation Service Providers (ANSP), aircraft operators and airport authorities. With a focus on improving system efficiency and predictability while enhancing safety, Metron Harmony delivers the necessary information to stakeholders for the benefit of the entire air traffic system.

BENEFITS

INCREASES AIRSPACE
AND AIRPORT
EFFICIENCY AND
PREDICTABILITY

ENHANCES AIR TRAFFIC
SYSTEM SAFETY

EMBRACES CDM ON A
LOCAL, REGIONAL AND
GLOBAL LEVEL

RECORDS AND REPORTS
ON CONTINUAL
OPERATIONAL
PERFORMANCE
IMPROVEMENTS

REDUCES
ENVIRONMENTAL
IMPACTS



THE SCIENCE OF HARMONIZING AIR TRAFFIC

45300 CATALINA COURT, SUITE 101
DULLES, VIRGINIA 20166 USA

OFFICE +1 703 456 0123
FAX +1 703 456 0132

WWW.MetronAviation.COM